



Dudgeon and Sheringham Shoal Offshore Wind Farm Extensions

Preliminary Environmental Information Report

Volume 2

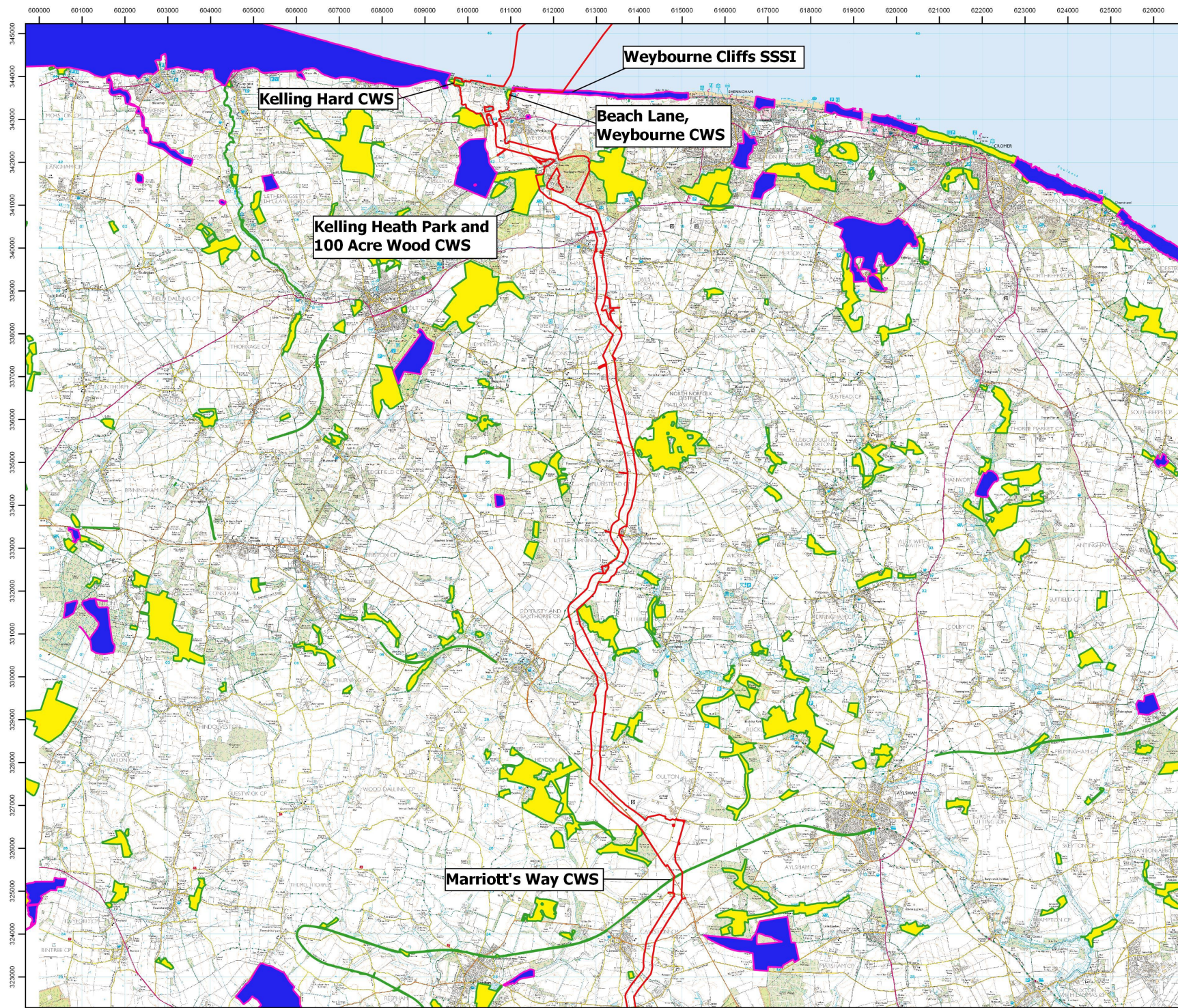
Chapter 22 - Onshore Ecology and Ornithology

April 2021

Title:	
Dudgeon and Sheringham Shoal Offshore Wind Farm Extensions Preliminary Environmental Information Report Chapter 22 Onshore Ecology and Ornithology	
Document no.: PB8164-RHD-ZZ-XX-RP-Z-0010	
Date:	Classification
29 April 2021	Final
Prepared by:	
Royal HaskoningDHV	
Approved by:	Date:
Johiris Rodriguez Tablante, Equinor	29 April 2021

List of Figures

- Figure 22.1 Designated Nature Conservation Sites within PEIR Boundary(North)
- Figure 22.2 Designated Nature Conservation Sites within PEIR Boundary (South)
- Figure 22.3 Great Crested Newt Survey and Desk Study Results Map (only showing Positive Records)



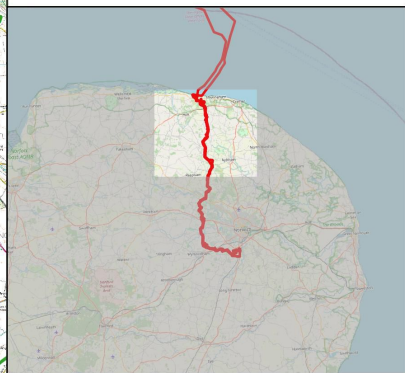
Sheringham Shoal and Dudgeon Extension Projects

Figure 22.1

Designated Nature Conservation Sites within PEIR Boundary (North)

- Legend
- PEIR Boundary
 - Site of Special Scientific Interest
 - County Wildlife Site

Data Sources: Insert Data Sources
Base Map: © Crown copyright and database rights 2021, Ordnance Survey 0100031673

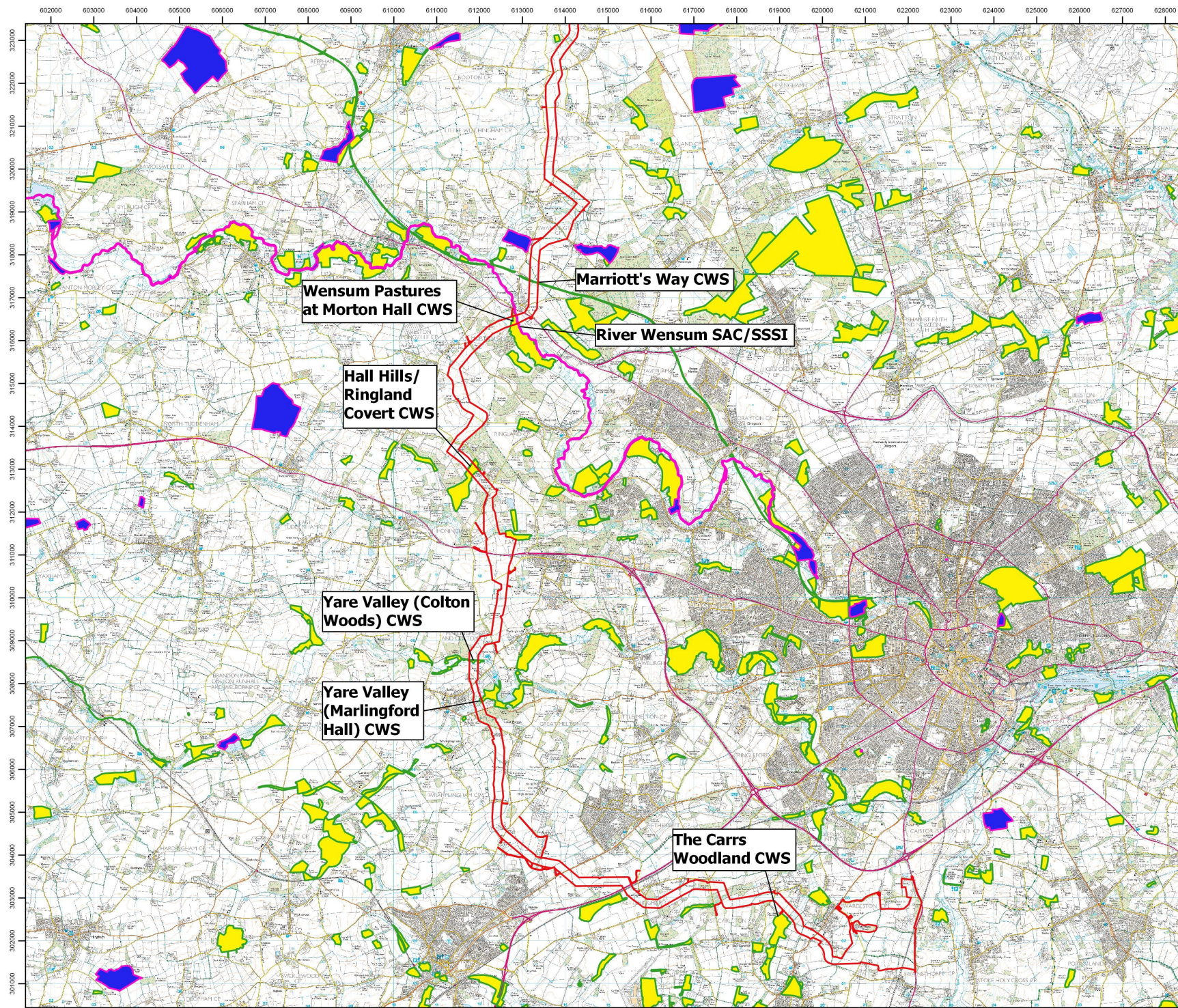


Document No: PB8164-WFR-ZZ-ON-DR-Z-9001-DesSitesMapNorth
Co-ordinate System: British National Grid
0 2000 4000 Metres
0 2000 4000 Yards

A	17/03/21	1:85,000	A3	WR	WR	RY
REV	DATE	SCALE	SIZE	DRW	CHK	APR

Report
Designated Nature Conservation Sites Map (North)





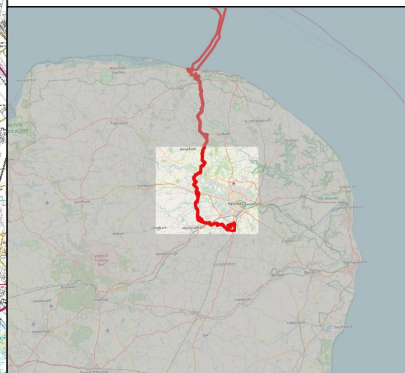
Sheringham Shoal and Dudgeon Extension Projects

Figure 22.2

Designated Nature Conservation Sites within PEIR Boundary (South)

- Legend
- PEIR Boundary
 - Site of Special Scientific Interest
 - County Wildlife Site

Data Sources: Insert Data Sources
Base Map: © Crown copyright and database rights 2021, Ordnance Survey 0100031673



Document No: PB8164-WFR-ZZ-ON-DR-Z-9002-DesSitesMapSouth
Co-ordinate System: British National Grid
0 2000 4000 Metres
0 2000 4000 Yards

A	17/03/21	1:85,000	A3	VR	VR	RY
REV	DATE	SCALE	SIZE	DRW	CHK	APR

Report
Designated Nature Conservation Sites Map (South)



